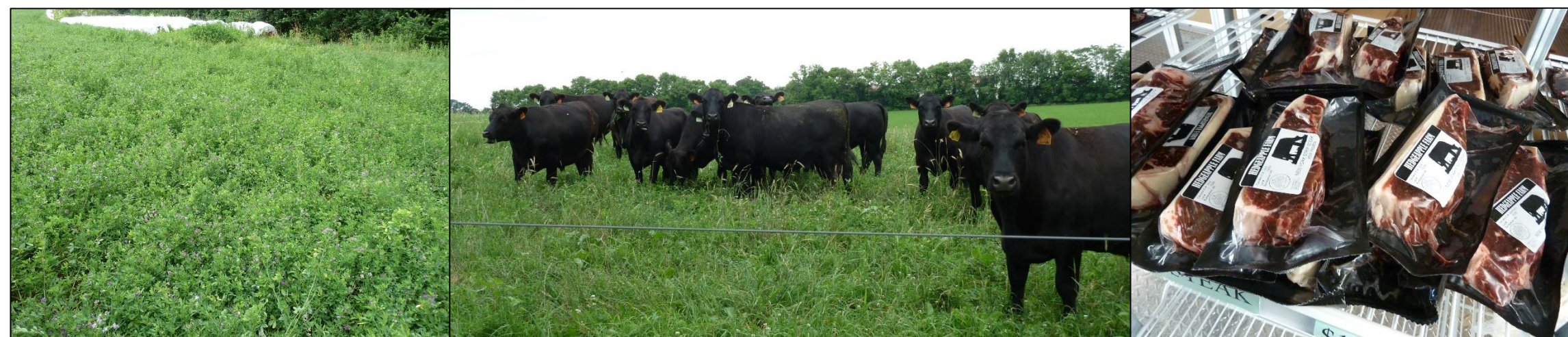


A Survey of Grass-finished Beef Producers in the Northeastern U.S.



Jasmine Dillon¹ and Alan Rotz²
¹Department of Animal Science, Pennsylvania State University; ²USDA-ARS, University Park, PA



PennState

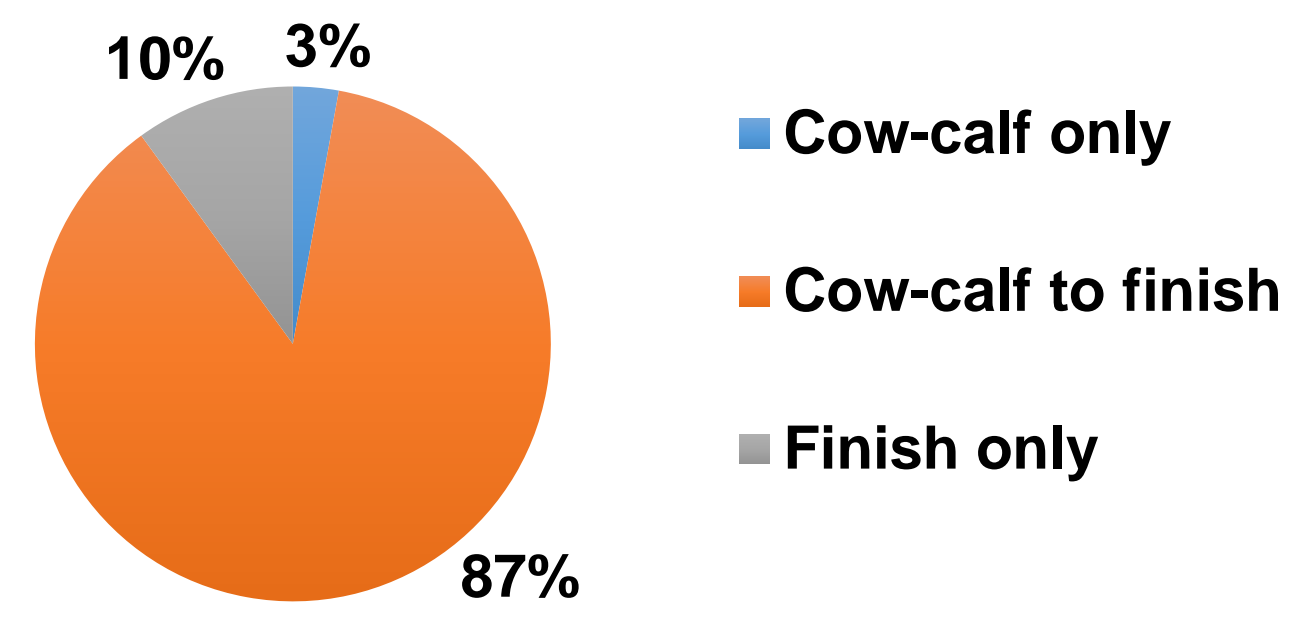


How is grass-finished beef produced in the Northeast?

- The U.S. beef industry is conducting an assessment of its environmental, economic, and social sustainability
- To estimate the resource use and impacts of the grass-finished beef industry, we need to understand how it is produced in the U.S.
- Methods.** An online survey and on-farm interviews were used to learn about management on grass-finished beef operations

The typical operation was cow-calf to finish with **20 cows on 113 acres**, with cattle finished at **24 months of age** and **1,100 lb.**

87% of operations maintained cattle on-farm from birth to finish

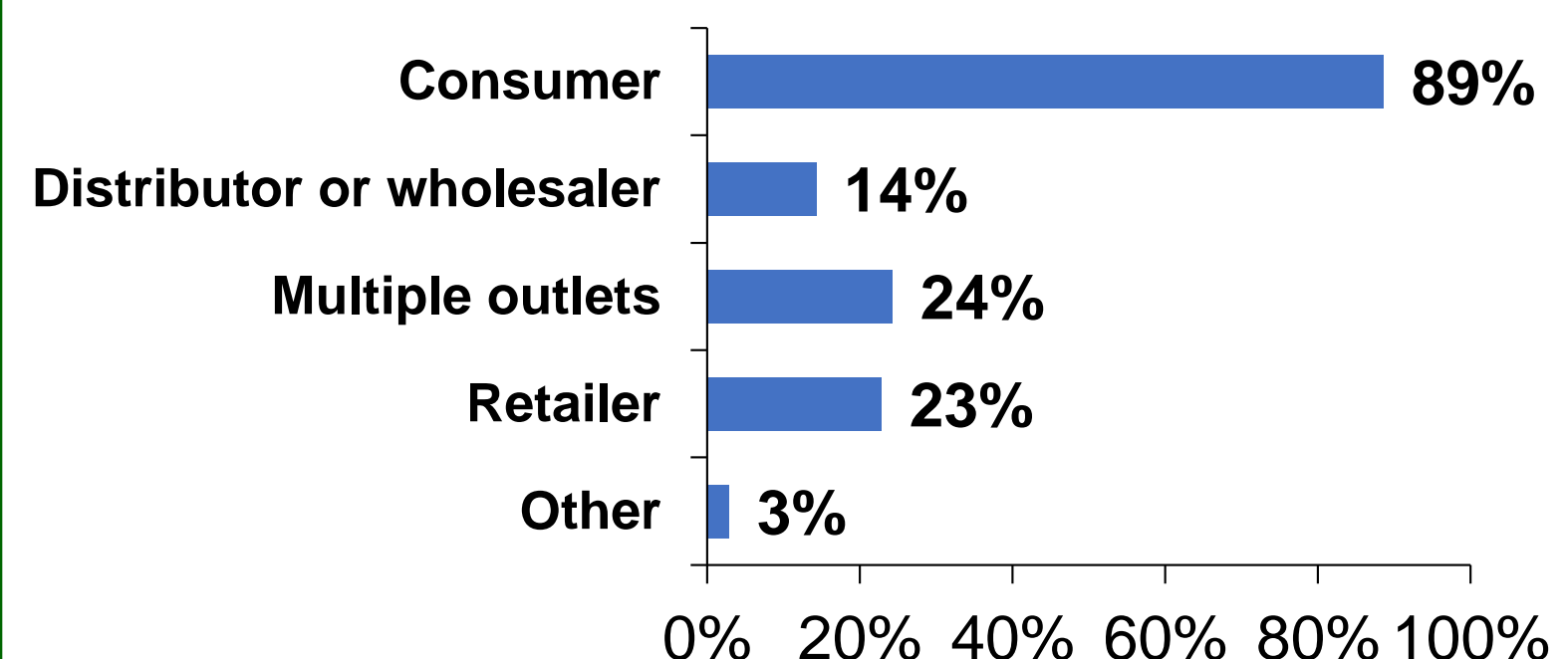


Herd characteristics and animal performance information

	Median	Average	Range
Cows	20	24	2 – 95
Bulls	1	1.7	1 – 7
Replacement heifers per cow	0.29	0.37	0.08 – 1.0
Mature cow weight, lb	1,200	1,192	800 – 1,650
Finish weight, lb	1,100	1,091	700 – 1,480
Finish age, mo	24	23	16 – 33
Estimated average daily gain, lb/d	1.6	1.6	0.99 – 3.0

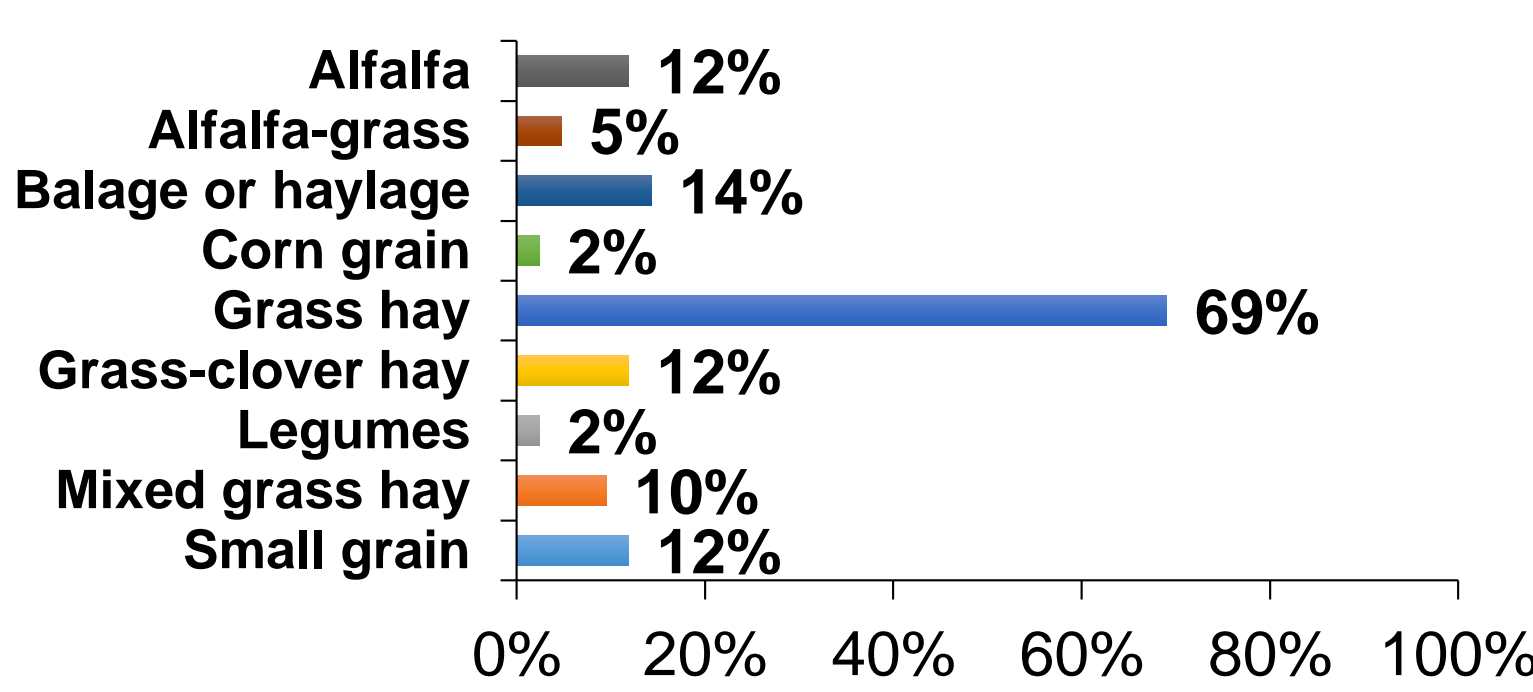
74% of producers traveled **fewer than 50 miles** to a processor, and **89%** marketed their beef **directly to the end consumer.**

The majority of producers marketed directly to the consumer

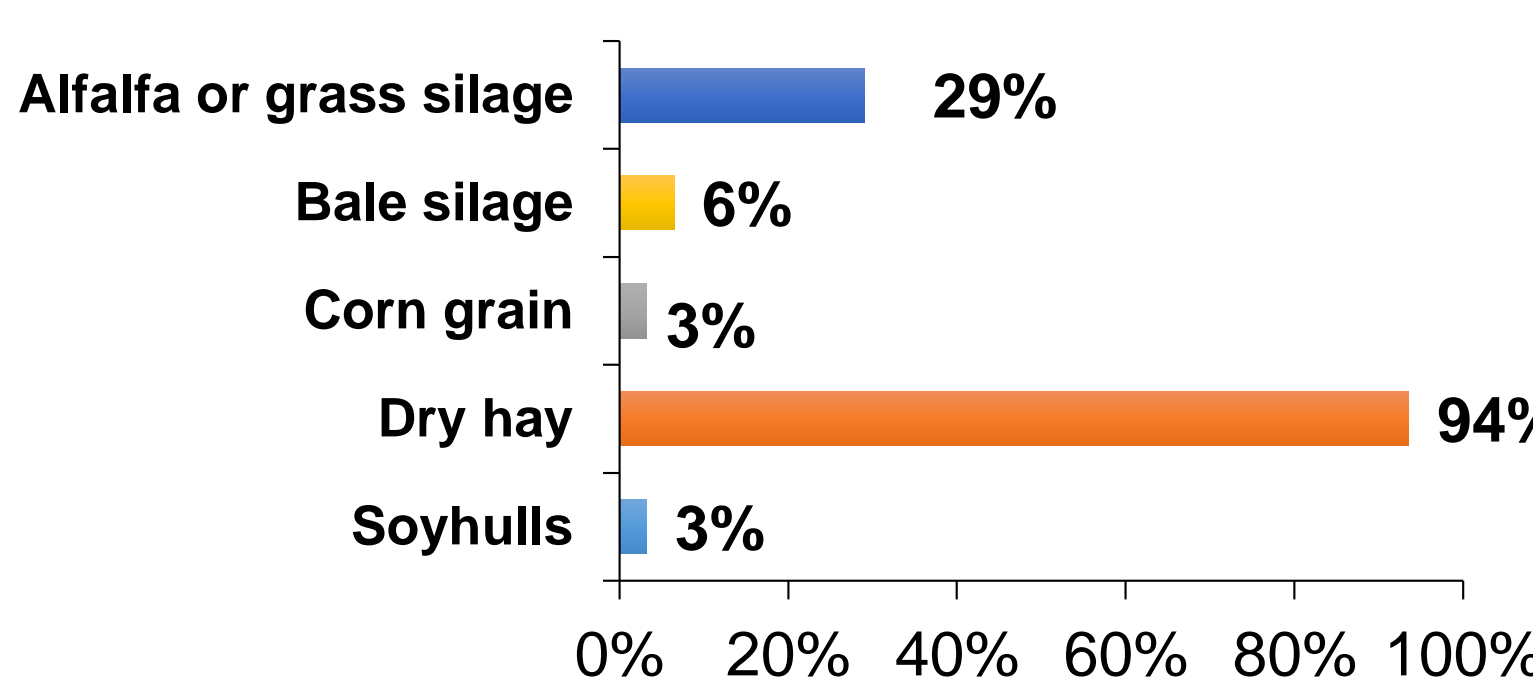


71% of producers **produced** supplemental feed on farm, and **50%** of producers **purchased** supplemental feed.

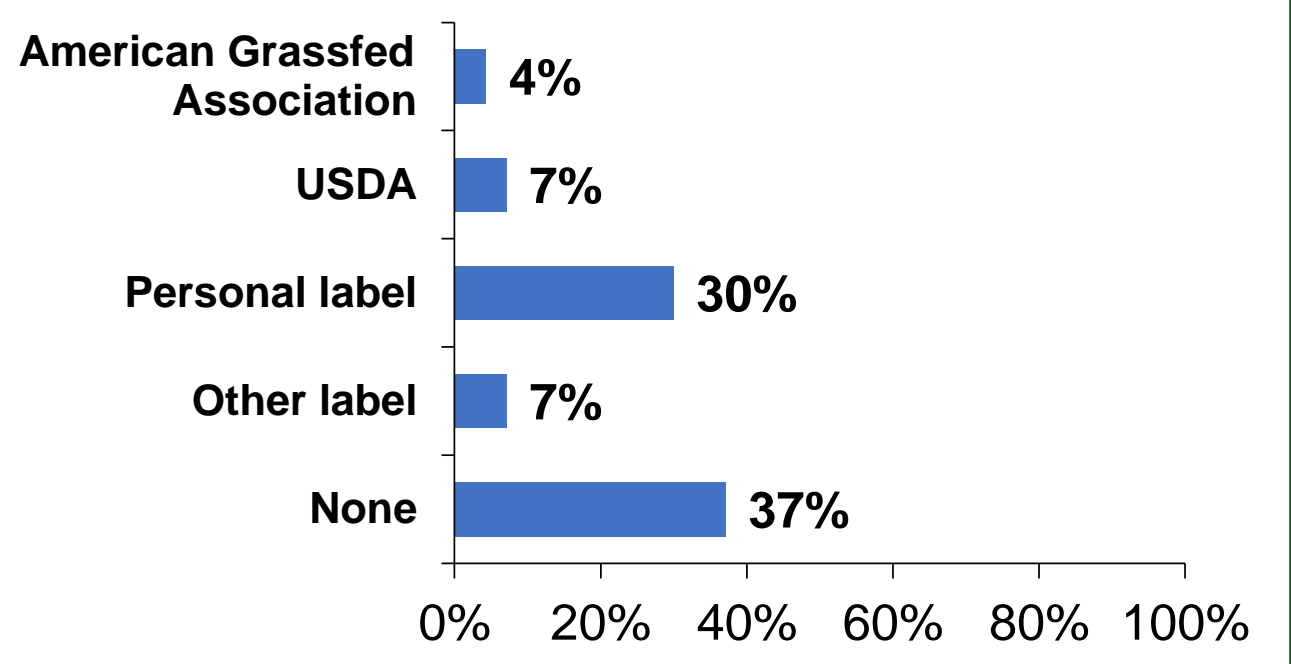
Grass hay was the most common homegrown feed



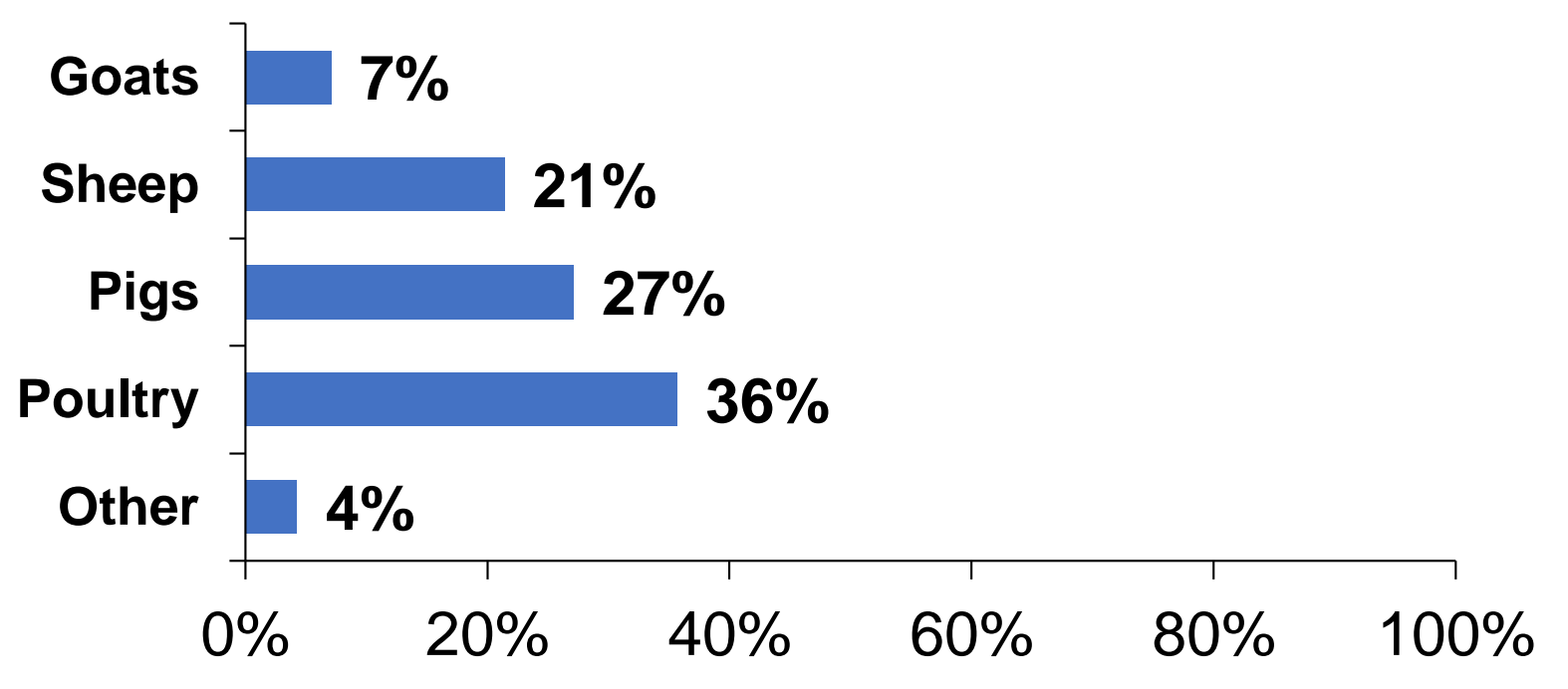
Dry hay was the most commonly purchased feed



Producers typically used a personal grassfed label or no grassfed label at all

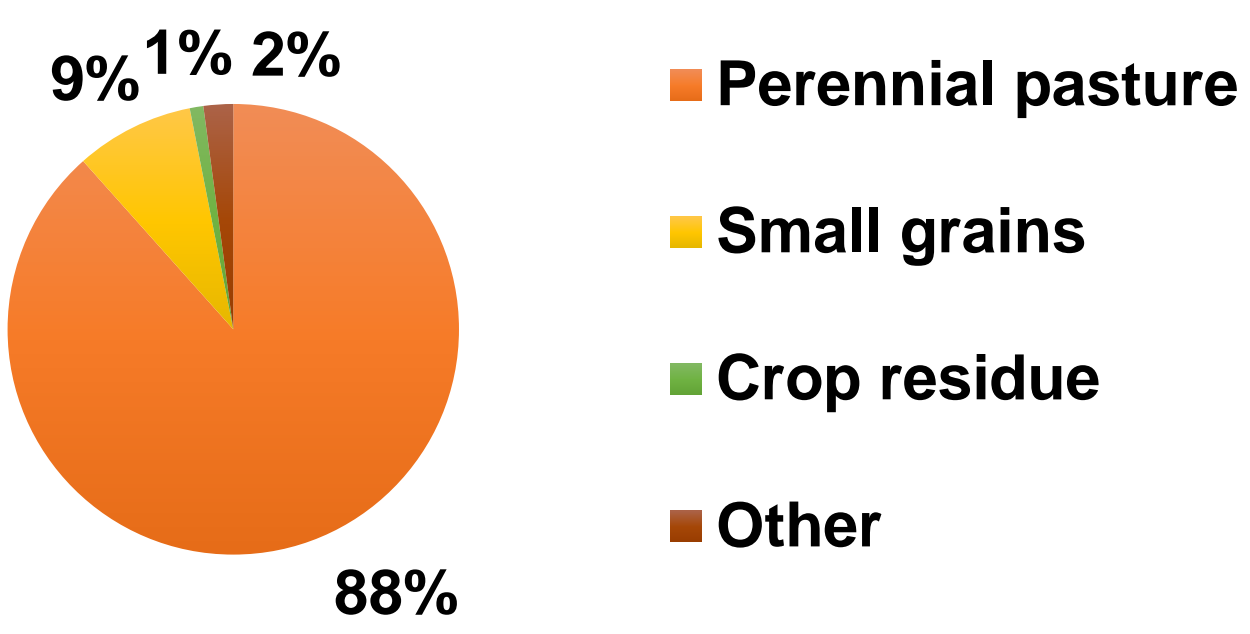


53% of producers raised additional species on farm



A total of 9,859 acres were represented by survey responses, **70%** of which were **grazed** and **30%** of which were **cropped.**

Perennial pasture made up the majority of grazed land



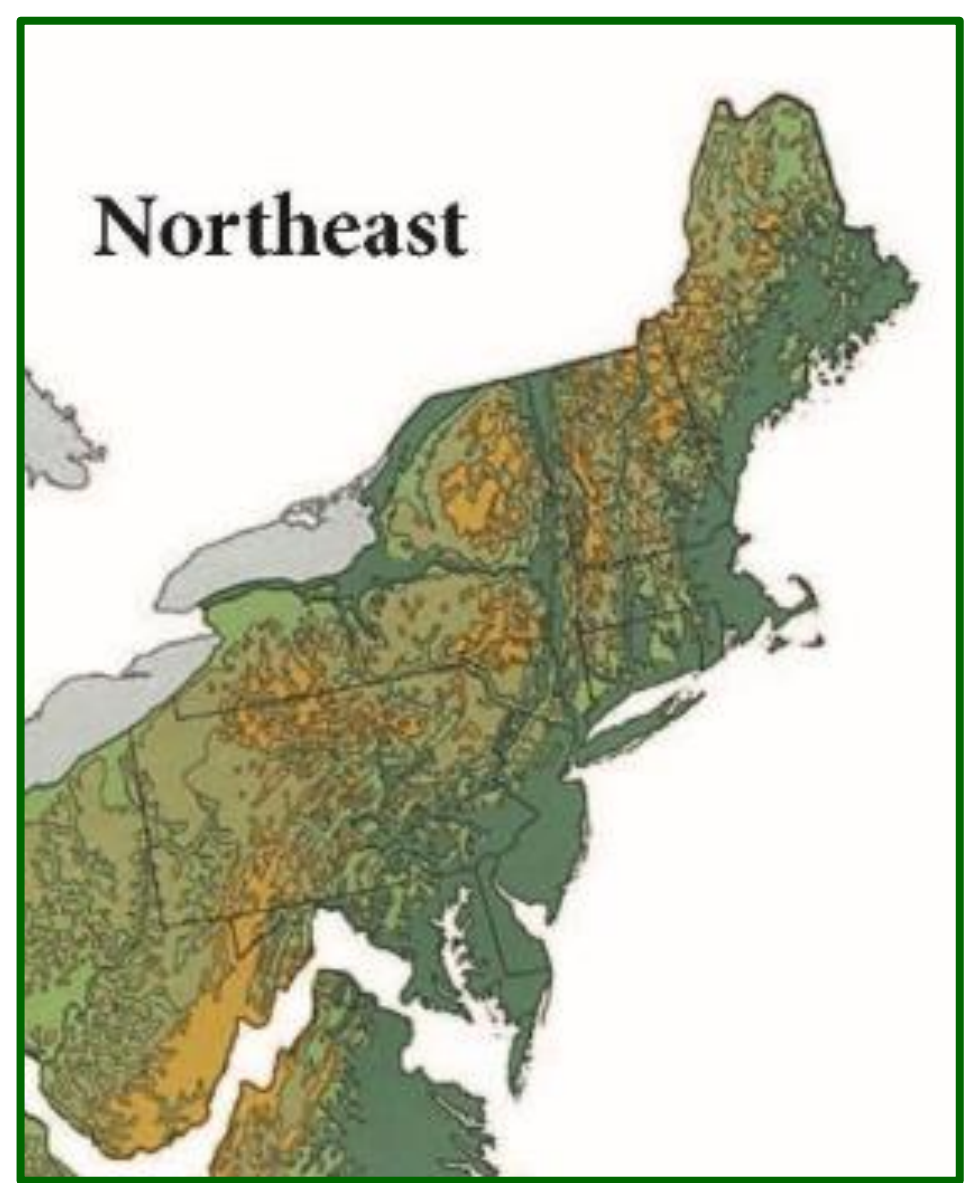
Average land use characteristics by sub-region

	Stocking rate grazed acres/cow	Total land use per cow total acres/cow
Lower Northeast	4.3	5.1
Upper Northeast	5.2	8.2
Overall	4.8	6.7

What's next?

- 1) National survey
- 2) Estimate the resource use and environmental footprints of grass-finished beef production
- 3) Identify optimal ways forward for the industry

70 responses were included in the analysis and organized by location within the Northeast



Number of responses by sub-region ¹		
	N	%
Lower Northeast	33	47
Upper Northeast	37	53
Total	70	

¹Number of responses after removing incomplete records and operations that were not grass-finishing